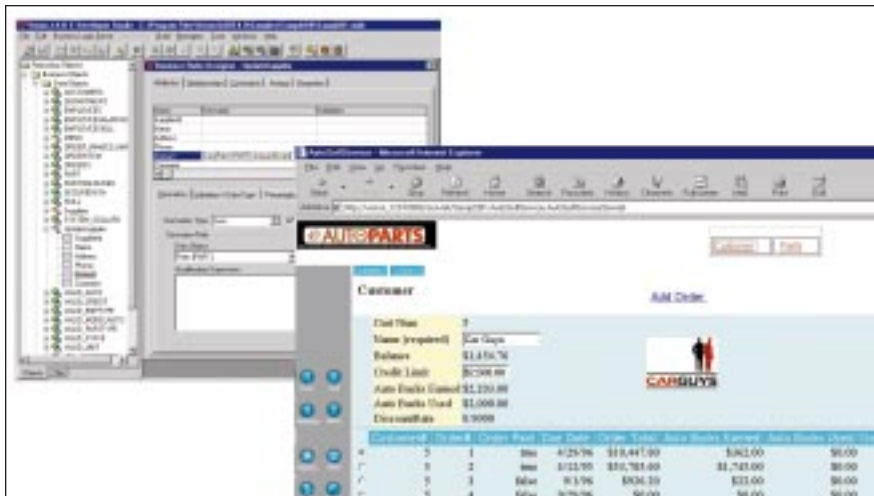


The Versata Studio

The Versata Studio is an application development environment for The Versata E-Business Automation System. It provides IT the ability to achieve a rapid cycle of continuous application development and deployment—necessary for distributed e-business applications.

The Versata Studio gives developers the edge to construct Java components automatically from business rules, and then to change them as quickly as business demands. Versata customers report a tenfold acceleration in complex business-to-business web application development resulting in quick time-to-market.



The Versata Studio enables you to define many aspects of your application such as the logic that determines how business objects behave, what your application looks like and how the user interacts with them.

Fast Development Cycles—The Process

The Versata Studio is a product designed for rapidly developing, deploying, and enhancing complex, transaction-based distributed applications for HTML and Java clients. It automates, in an open and straightforward manner, the construction of client, logic and data tiers for distributed e-business applications.

1. Define the Business Object Model

Begin with the requirements that define your business. Create business objects (e.g., ORDER, PART) and their attributes directly in Versata Studio, re-engineer

them from relational databases, CORBA objects, and Java Beans and classes, or import them from modeling tools such as Rational Rose.

2. Declare the Business Objects' Business Rules

Business rules are the policies that define the way a business is run.

Examples of rules:

- “the customer’s account balance may not exceed the credit limit”
- “account balance is the sum of unpaid order”
- “send mail to account rep when a large order is placed”

Developers can build rules quickly and easily, over and over, for the business objects. Developers are enabled to evolve the rules as quickly as business requirements change. Rules may span business objects and can be extended by incorporating custom Java code in the event model and methods that implement the rules.

3. Deploy Business Rules to The Versata Logic Server

Business rules are compiled into 100% Java components and deployed to The Versata Logic Server. The business objects are now ready for use by the application.

4. Design the User Interface

HTML or Java clients are constructed using a graphical model of the application by selecting the business objects, the form or page style and navigation between forms using Versata Studio’s Application Designer. The application is then compiled and run against the business objects deployed to the Versata Logic Server.

5. Test with Users

Without writing procedural code to implement business logic, you can show your users the working application, complete with logic and data, to ensure the application satisfies their business requirements.

6. Evolve with Change

As the business requirements change, the developer can easily add new business objects, rules and forms by enhancing or customizing server components and user interfaces using Versata Studio in a live development process.

7. Extend, Integrate

Extend the applications with CORBA, EJB, Java Beans, or Swing classes. Integrate with other systems and data sources through Versata connectors—XDA (eXtensible Data Access).

The Versata Studio Development Environment

The Versata Studio’s development environment is used to develop the business objects, forms and applications and manages all information in a repository. Graphical editors are used to create and modify the application’s components.

Business Rules Designer

The Business Rule Designer is one of the editors of the Versata Studio which allows developers to develop business rules and objects without needing to know Java. The following are representative types of rules the Business Rule Designer automates:

- Relationships among Business Objects e.g., *parent, child*.
- Constraints on Business Objects e.g., *Only sales reps can place orders*.
- Validations of attributes e.g., code lists, data type, required conditions, etc.
- Derivations of attributes: counts, sums, formulas, e.g., *The order total is the sum of the line items*.
- Transformations of data: Create variably-structured child Business Objects e.g., *For a supply chain system, Suppliers A, B, and C will receive order types Order A, Order B, Order C*.
- Event-actions, method calls: e.g., *On large orders, send e-mail to manager*.
- Presentation rules: captions, formats, messages, etc.

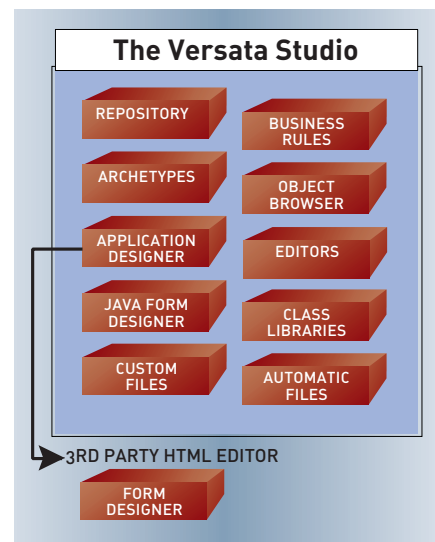
Application Designer, Form Designer and Page Designer

To design a web application with Versata Studio's development environment you create the logical model of your application by dropping business objects onto the graphical Application Designer's workspace

and use wizards to specify form navigation, data dependencies, captions, picks and other application properties. You have your choice of styles, which can be customized to satisfy corporate standards, that determines the look and feel of the Java form or HTML page. Versata Studio's Form Designer is used to define the user interface for Java and HTML applications. Your favorite HTML content tool can then be used to refine the HTML pages.

Complete Java and HTML Development

- Extend applications using integrated Java editor, object browser and HTML editor of choice.
- Create reusable visual and behavioral styles (archetypes) for both Java and HTML interfaces.
- Debug source code locally and remotely.
- HTML pages with editable grids, scalars, grid row select.
- HTML client support for master-detail behavior within page and dependent behavior across multiple pages.
- All standard controls for HTML and Java clients, plus explorer, tab, map, date, and panel controls for Java clients.
- Transactions: *Insert, Save, Delete, Undo, Query, Search, Cancel*.
- State and session management Servlet partitioning through the web server for HTML application.



Versata Studio is a superior integrated development environment for web applications. Use it to design, deploy and manage all tiers of a web application system.

The Versata Studio includes:

- Application Development Environment
- Developer License for The Versata Logic Server (single-user development only)
- Logic Server Console
- A Web Server
- A trial version of Macromedia's DreamWeaver
- Internet Proxy Server

System Requirements:

- Windows NT 4.0, Windows 95/98
- Pentium 200 or higher
- 96 MB RAM minimum for single-user development, 128 MB RAM recommended
- JDK Level: 1.1.8

The Versata E-Business Automation System

- Versata Studio
- Versata Logic Servers for Windows NT, Solaris, HP-UX, IBM AIX
- Versata Connectors (eXtensible Data Access) for Oracle, Microsoft, Informix, and Sybase, DB2 UDB, DB2/400, DB2/MVS, and CICS



Versata, Inc. 2101 Webster Street, 8th Floor, Oakland, CA 94612, ph 800.984.7638, 510.238.4100 fx 510.238.4101 info@versata.com www.versata.com

©1999-2000 Versata, Inc. All rights reserved. Versata Studio, Versata Logic Server and Versata Connectors are trademarks of Versata, Inc. Java and all Java-based trademarks and logos are trademarks or registered trademarks of Sun Microsystems, Inc. in the United States and other countries. All other company and product names are the trademarks or registered trademarks of their respective companies.