

Versata Process Logic Engine

■ ■ Versata offers a powerful solution to help customers automate e-business transactions, and the Process Logic Engine is an important extension that allows us to take the value of transaction automation to our financial services customers.

While process and workflow automation has been around awhile, it has never been combined with business rules and applied directly to e-business transactions.

Our customers want to abstract their business strategy from system code so they can lead by automating strategic changes while the competition writes code. ■ ■

Raj Rao
Founder and Chief Strategist
Symphoni Interactive

The Versata Logic Server Process Logic Engine Version 5.5

Integrated process automation for enterprise applications created for the Versata Logic Server

The Versata Process Logic Engine is a complete graphical process modeling environment and process engine for the Versata Logic Server.

It extends the power of automated business logic into complete workflows that coordinate human activities with chains of rule-enabled transactions to ensure that designated users perform tasks in a defined sequence and, if necessary, within a defined timeframe.

The result is enhanced business control, visibility, escalation and exception processing for enterprise applications.

The Process Logic Engine helps organizations achieve true business agility and operational efficiency by providing:

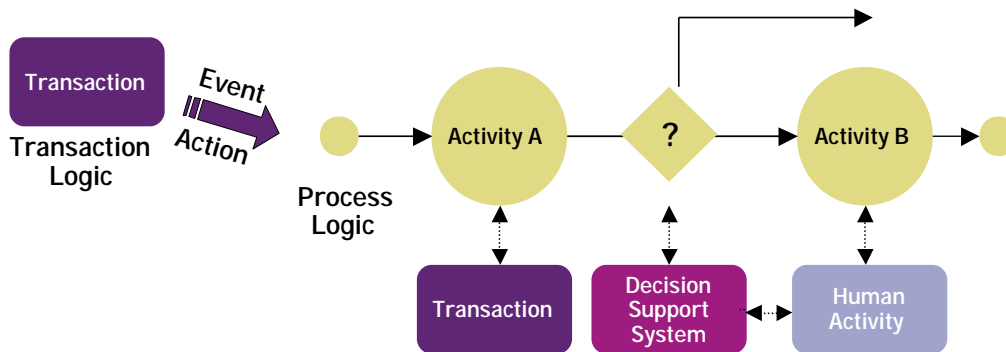
- > A high productivity, visually-oriented, and declarative development environment
- > A robust, highly scalable, runtime process engine
- > True application flexibility by leveraging industry standards at all tiers
- > Software platform, data source, messaging system, and middleware independence
- > A graphical modeling and process rules approach to process automation
- > Rich auditing and monitoring capabilities

Running as an integrated component of your existing infrastructure, the Versata Process Logic Engine automates up to 80% of the process automation development process —effectively removing the traditional problems of cost, inflexibility, and time associated with hand-coding such systems.

Versata Process Logic Engine

Three Kinds of Business Logic:

1. Transaction Logic automates a business transaction at a point in time
ex: transfer funds from checking to savings
2. Process Logic automates the sequence of transactions over time
ex: if funds over \$1 million, get approval, then transfer funds
3. Decision Logic automates flow control between transactions
ex: does this transfer require additional approvals or what should be charged for the transaction?



There are three different kinds of business logic. Versata provides a complete solution for transactions and process, and calls to its business partners for Decision Logic integrating with a traditional rules (inference) engine. Transaction logic is executed and managed with the Versata Logic Server's Transaction Logic Engine. Process Logic is executed and managed with the Process Logic Engine. And, Decision Logic is handled by products such as ILOG's JRules.

Included - A Complete Design and Execution Environment

The Versata Logic Server Process Logic Engine contains two key components, the Versata Process Logic Engine and the Versata Process Logic Designer.

The Versata Process Logic Engine is the runtime process execution component of the Versata Logic Server. The Versata Process Logic Engine enacts business processes, routes work to human or automated participants, and provides integration points with external enterprise systems.

Using the Versata Process Logic Engine, the processes and workflow of an application are modeled in a flexible, data-driven fashion that allows easy modification at any time

— without code changes.

Versata's Process Logic Designer provides design-time support for building process models that are enacted by the Versata Process Logic Engine running within the Versata Logic Server. These process models, defined graphically in the language of business analysts—namely activity diagrams or workflows—contain the sequences of activities, sub-processes, and transitions that define the sequence, delivery, and execution of transactional interactions over time, people, and systems.

Adding Process Logic

The Versata Process Logic Engine enables enterprises to reduce the labor and cost involved in delivering application functionality related to

process, as well as allowing business analysts to easily identify process bottlenecks and quickly test process optimization solutions. This is achieved by defining, modeling, executing, and monitoring process activity.

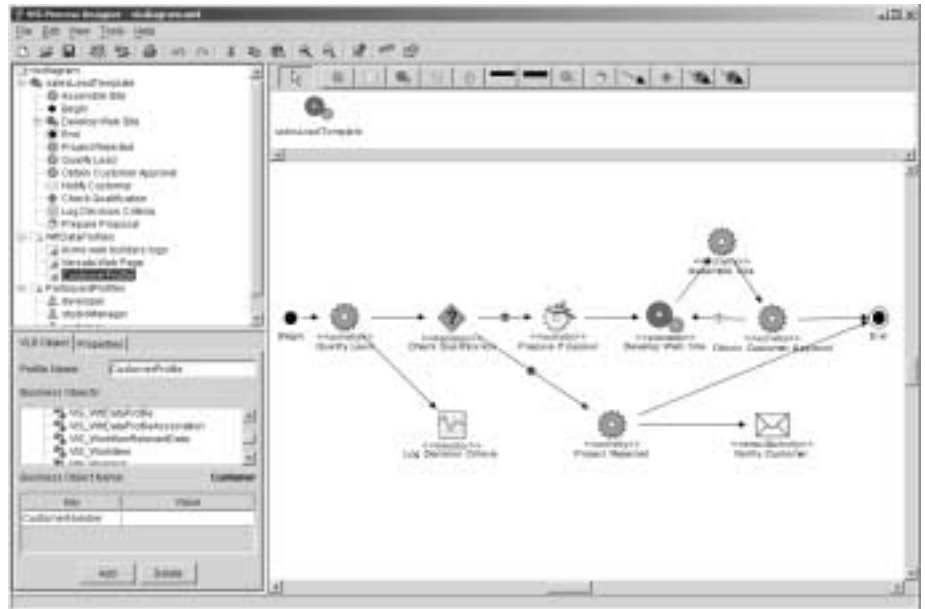
Define | Model | Execute | Monitor

Business analysts and IT specialists collaborate to define business processes using the Versata Process Logic Designer. This highly graphical modeling environment enables processes to be defined and changed in pre-deployment or runtime mode.

The Versata Process Logic Engine enables organizations to easily integrate their business processes into their core applications, such as claims processing, financial self-service, and order approval


 The flexibility of the Versata System allows us to change our applications as often as our business requires, ensuring we provide our customers with superior service.
 

Jim Murry
 CIO/CTO,
 Micro General



Use the Versata Process Logic Designer, a graphically-oriented process modelling environment, to design and coordinate the interactions of your business.

management.

Once defined and modeled, the Versata Process Logic Engine then executes the models, automatically calling upon the resources required at each step of the flow.

The power of the complete Versata Logic Server enables dynamic, automated transactional processes across the enterprise.

Changes to process models are immediately propagated throughout the integrated application, enabling organizations to truly reflect real-world business interactions through technology solutions.

The Versata Process Logic Engine goes beyond the pure coordination and management of business processes. It also enables business managers to make more informed decisions through its auditing and

monitoring capabilities.

Integrated Process Logic

To easily design and deploy process-oriented logic, the Versata Process Logic Designer is integrated with the Versata Logic Studio.

The graphical process modeler can be called from within the Versata Logic Studio, models are stored in the integrated Versata rules-repository, and process models are deployed using Versata's point-and-click interface.

To integrate Versata transactions with process logic, process-oriented methods are automatically added to business objects. These methods can be called from action/event business rules to

initiate, delete, abort, suspend, or resume workflow processes. In addition, business objects can write directly to processes through the Versata Connector layer.

To integrate Versata processes with transaction logic, special "update activities" are available from process models. These communicate directly with Versata business objects to inspect values, alter flags, report status, and otherwise direct the flow of transactions.

For complete, end-to-end integration, the Versata Logic Server's Presentation Logic Designer can be used to create complete HTML or Java applications that include work-lists, activity descriptions, monitoring screens, and other process-level information.

At a Glance

Features	Benefits
> Enables dynamic management of process flows	> Instantly respond to business change by extending and refining processes—design new processes or change existing processes on the fly
> Provides full support for human-interactive activities such as escalation, security, and time delay	> Reliably handle the changes and exceptions that make your business unique
> Effectively manages complex business processes across multiple applications, people, departments, and organizations	> Eliminate the error-prone, synchronous, hand-off of tasks between people, departments, and organizations
> Integrates with the Versata Logic Server to build your process automation strategy on transactional business rules	> Integrate your organization's unique and complex business transactions and decisions into your business processes
> Records ANY information at ANY point in your processes, specifying ALL the data necessary for making business decisions, using the Metrics Monitor	> Make informed changes to your business based on real data and statistical evidence—without interrupting processes in action
> Exposes full, open API design and published objects/methods for all server functionality	> Fit your process automation engine into your existing or chosen infrastructure
> Integrates with organizational knowledge systems, including LDAP, for user and workgroup administration	> Leverage your existing organizational knowledge systems
> Leverages worklist APIs to adapt virtually any client GUI for process automation—HTML, JSP, XML, Java, e-mail, etc.	> Integrate business processes into your existing client interfaces, and enable end-user customers to drive and control their own processes
> Customizes process models with industry-specific icons, via UML specifications	> Leverage existing industry paradigms to build an interface end-users readily understand

System Requirements

Operating System	IBM AIX Sun Solaris Windows NT Windows 2000
Application Servers*	BEA WebLogic Server IBM WebSphere Application Server
Databases	DB2 Oracle SQL Server Sybase

* The Versata Process Logic Engine can run within an application server or standalone
 ** May require third-party JDBC drivers

for more
 Information, visit
www.versata.com

Versata, Inc. 300 Lakeside Drive, Suite 1500, Oakland, CA 94612-3543 USA
 web www.versata.com toll-free 1.800.984.7638 ph 510.238.4100 fx 510.238.4101

United Kingdom
 Versata
 Parkshot House
 5 Kew Road
 Richmond
 Surrey TW9 2PR
 England
 ph +44 (0) 20.8334.8080
 fx +44 (0) 20.8334.8180

France
 Versata
 54-56 avenue Hoche
 75008 Paris
 France
 ph +33 (0) 1.56.60.58.40
 fx +33 (0) 1.56.60.59.80

Germany
 Versata
 Flughafenstr. 52
 D-22335 Hamburg
 Germany
 ph +49 (0) 800.VERSATA
 fx +49 (0) 40.53326.100

© Copyright 2003 Versata, Inc. All rights reserved. Versata, Versata Interaction Suite, Versata Interaction Server, Versata Process Logic Engine, and Versata Process Logic Designer are trademarks of Versata, Inc. Java and Java-based trademarks and logos are trademarks or registered trademarks of Sun Microsystems, Inc. in the United States and other countries. All other company and product names mentioned are the trademarks or registered trademarks of their respective companies.

DS020403 2/4/03 USA DESIGN: WWW.VERSATA.COM

